

sarom plus

A M I G O





AMIGO | 719



AMIGO | 701



AMIGO | 721



AMIGO | 720



AMIGO | 727



AMIGO | 722



AMIGO | 724



AMIGO | 725



AMIGO | 707



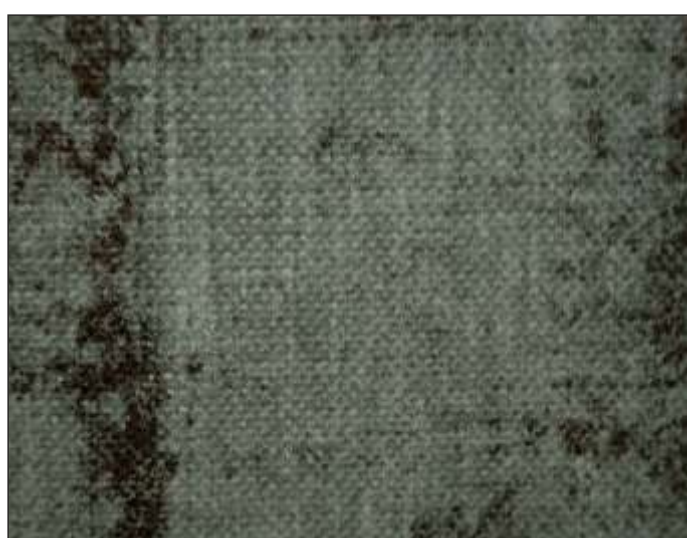
AMIGO | 726



AMIGO | 711



AMIGO | 712



AMIGO | 718



AMIGO | 713



AMIGO | 717



AMIGO | 715



AMIGO | 716



AMIGO | 714



AMIGO | 723



AMIGO | 710



AMIGO | 702



AMIGO | 703



AMIGO | 704



AMIGO | 705



AMIGO | 706



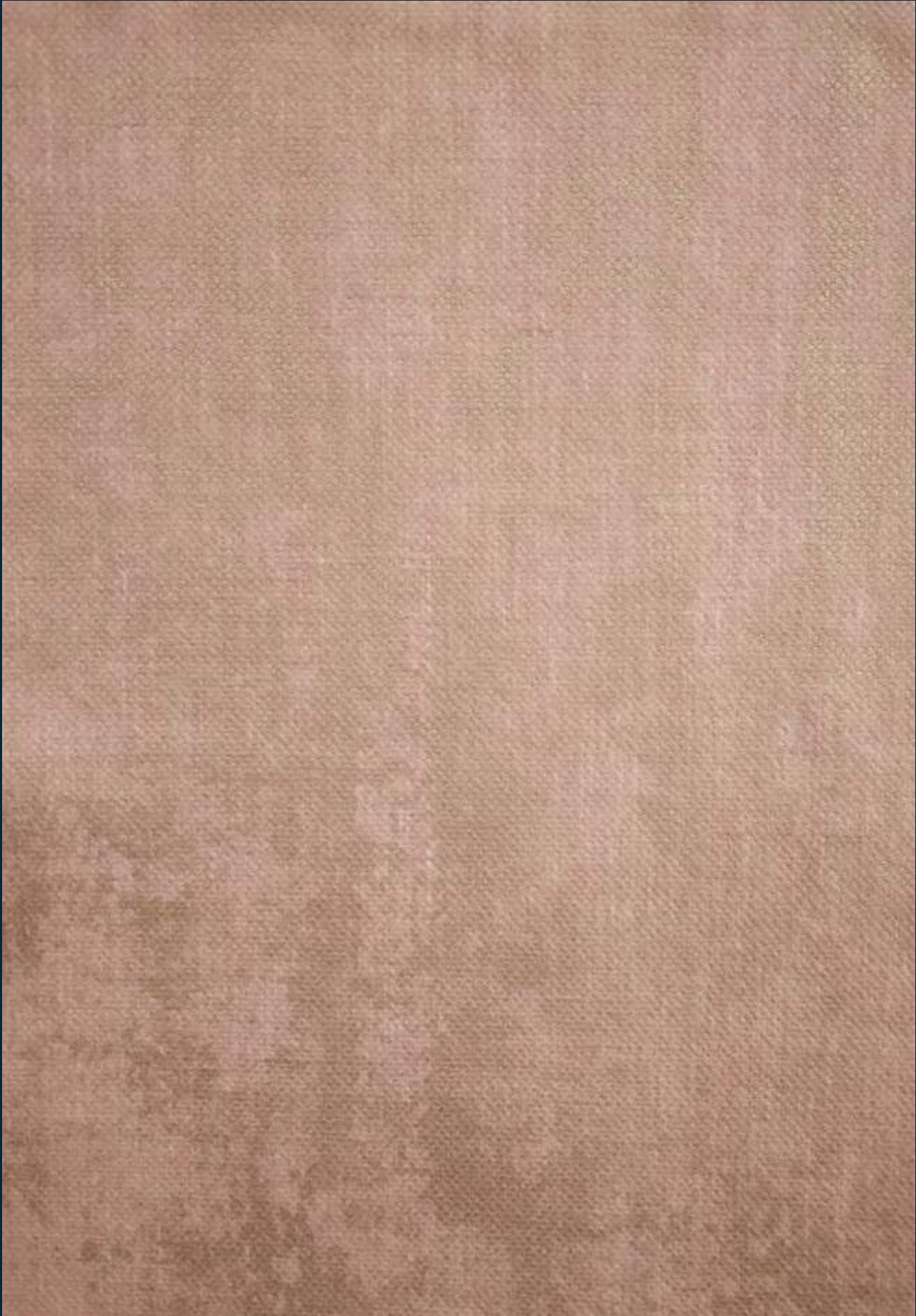
AMIGO | 709



AMIGO | 708



AMIGO | 728



AMIGO | 710

AMIGO

DESIGN	WIDTH	GSM	COMPOSITION	COLOR FASTNESS TO LIGHT	MARTINDALE	WASHING INSTRUCTION	END USE
AMIGO	142 CM	370	52% Polyester, 48% Cotton	4-5	70000	▲☒☐○☒	🛋️ 🪑 🪞
BELLA	143 CM	104	60% Cotton, 40% Polyester	NA	NA	▲☒☐○☒	🪞
ARCO	143 CM	102	60% Cotton, 40% Polyester	NA	NA	▲☒☐○☒	🪞

Special Note: Wash Care for Foil Print

Foil print can be less permanent than original base fabric. It tarnishes after washing and may start to flake off slightly after numerous wash.

We recommend to follow the certain care while washing fabric

- ✓ Use delicate wash cycle or better yet wash by hand with cold water and a mild detergent
- ✓ Hand dry
- ✓ Always iron on reverse side of foil
- ✓ Foil on sofa and Chair will fade eventually- depends on usage.

Wash care instructions need to be followed for prolonged usage of fabric, otherwise will damage the fabric. Test results were gathered from various samples and therefore represent average indicative values. Discolouration caused by clothing fabrics such as jeans does not represent a material defect. Minor colour deviations & discolouring in context of permissible industrial tolerance standards.

Product Color May Slightly Vary From Original Due To Photographic Lighting Sources Or Your Screen Settings.



AMIGO

sarom plus